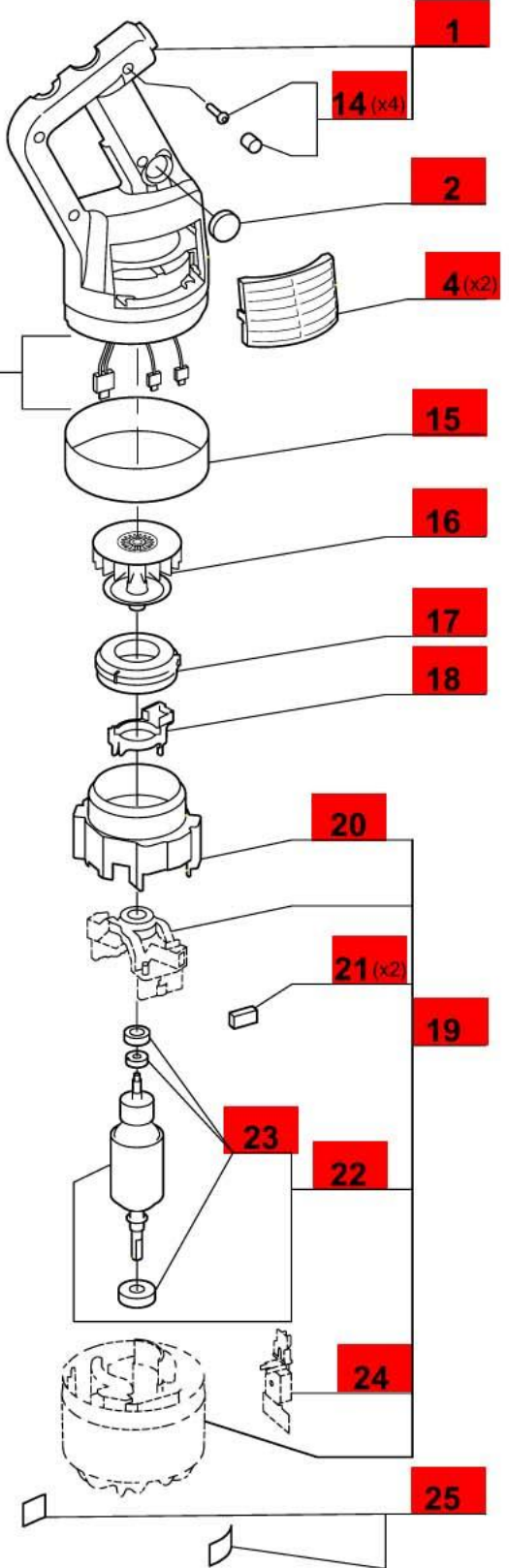
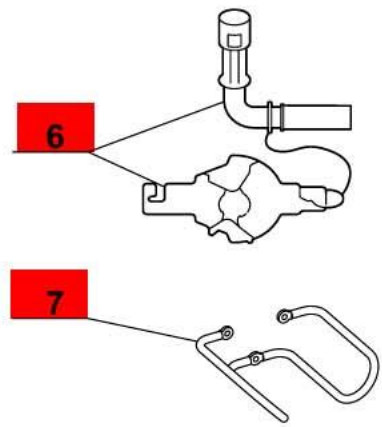
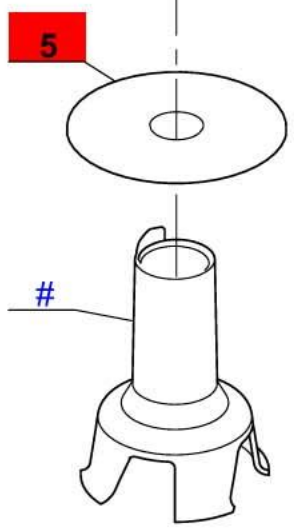


**Click on Red Dot
 OR
 Call us
 800-465-6060**



See next diagram / Voir dessin suivant.

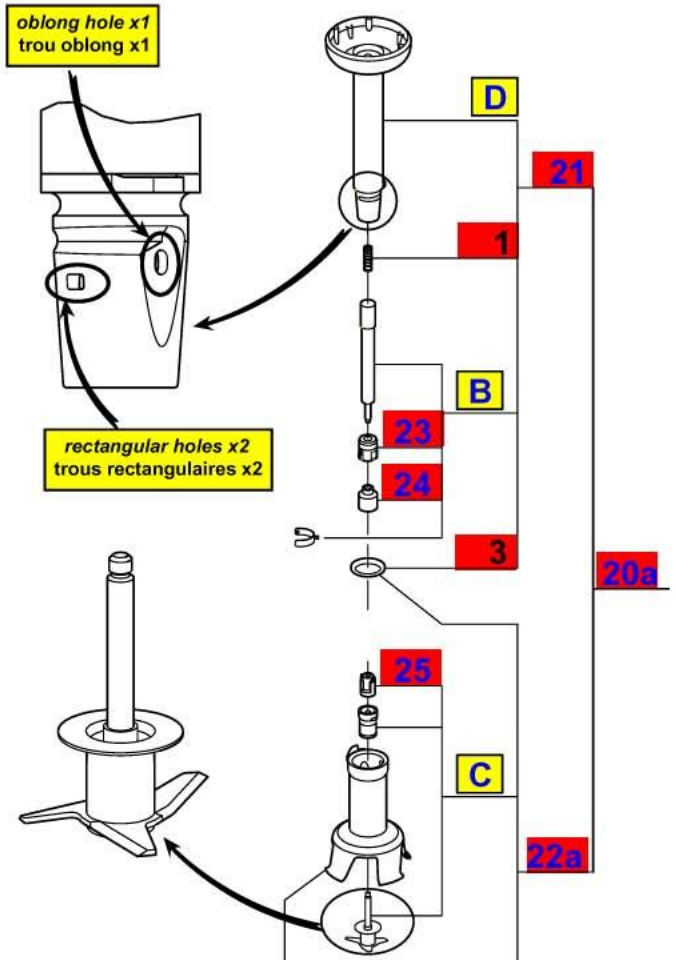
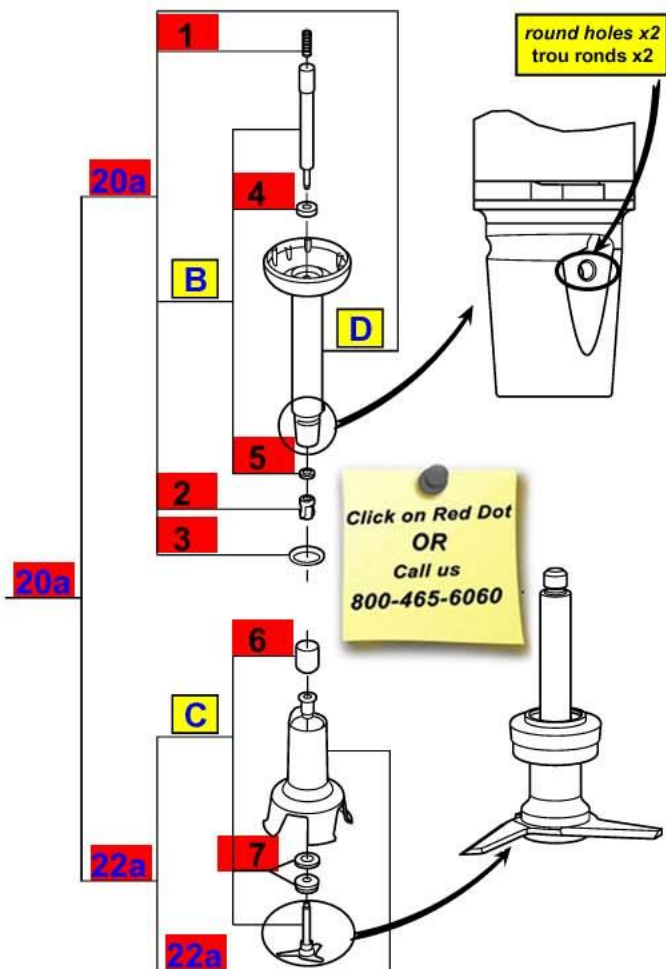
Determine the series of the tube & end bell to order some parts (see table below)

Déterminer la version du tube & de la cloche pour commander certaines pièces (voir tableau ci-dessous)

	Original version : Tube & end bell Version origine : Tube & cloche	Tube original series & end bell series A Tube version origine & cloche version A	Tube series A & end bell original series Tube version A & cloche version d'origine	Tube series A & end bell series A Tube version A & cloche version A
B	8	8		26
C	9	27		27
D	20a	21		21

Original series : Tube & end bell
Version d'origine : Tube & cloche

Series A : Tube & Stainless Steel end bell
Version A : Tube & cloche INOX



WARNING : All indexes followed by the letter a are replaced by series A parts or assemblies
ATTENTION : Tous les index suivis de la lettre a sont des pièces ou ensemble remplacés par la version A