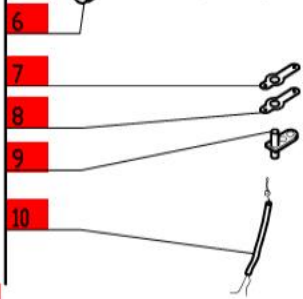
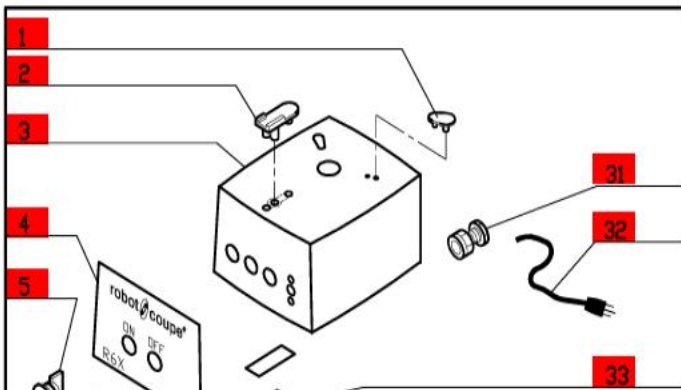
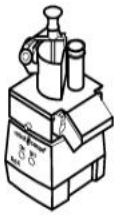
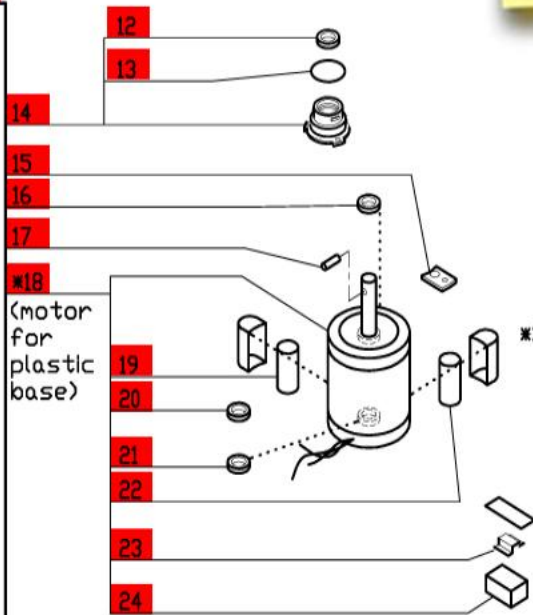


R6X Series D

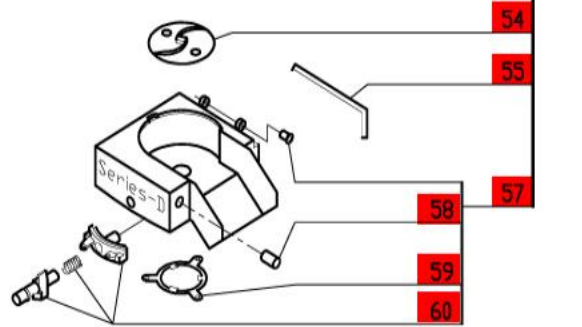
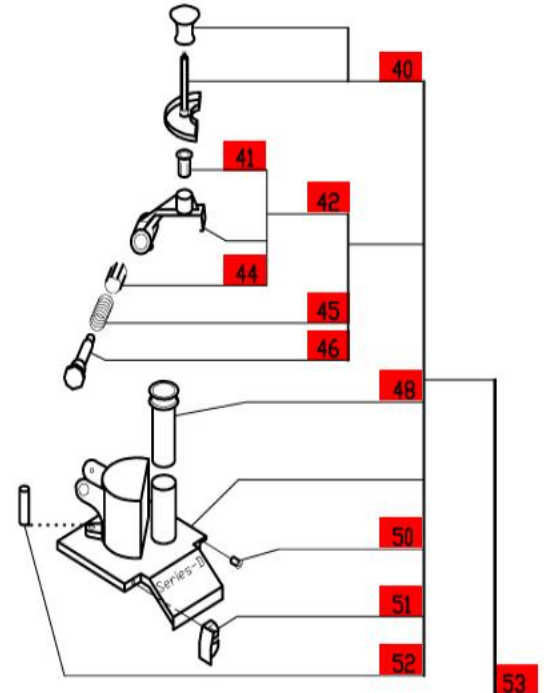
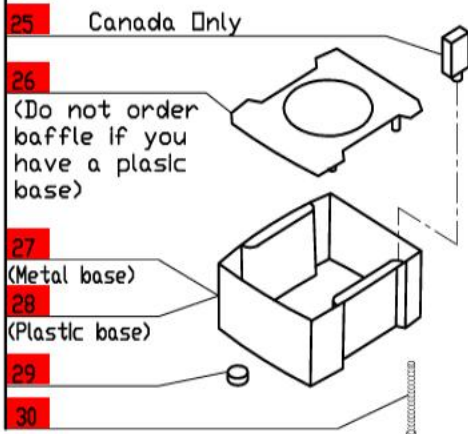
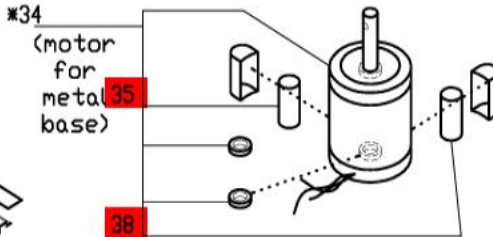
Series D, Serial Numbers 237xxxxx03
 1- Speed, 120 Volt, 1 Phase, 60Hz., 1 HP.
 850 RPM, 7.6 Amps
 Use Series-D Plates.



**Click on Red Dot
 OR
 Call us
 800-465-6060**



* RA604E Motor is no longer available.
 Order number
 S194565, R611, 117770,
 29620, and four
 BX658 screws.



ACCESSORIES

Use only cutting plates listed on the "Series D" Chart.

